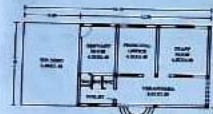
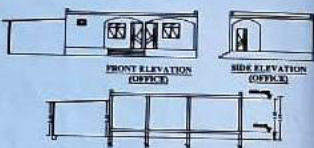


FRONT ELEVATION

SECTION A-A-A



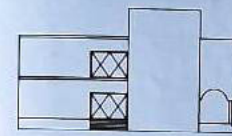
EXISTING GROUND FLOOR PLAN (OFFICE)



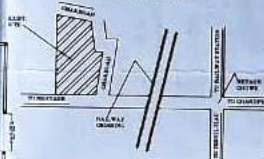
FRONT ELEVATION (OFFICE)

SIDE ELEVATION (OFFICE)

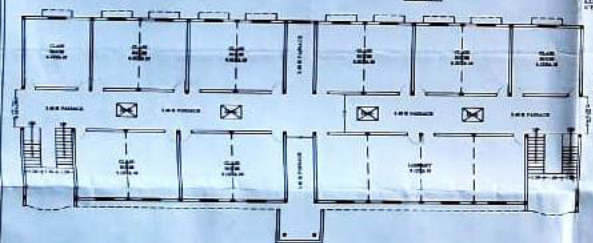
SECTION A-A-A (OFFICE)



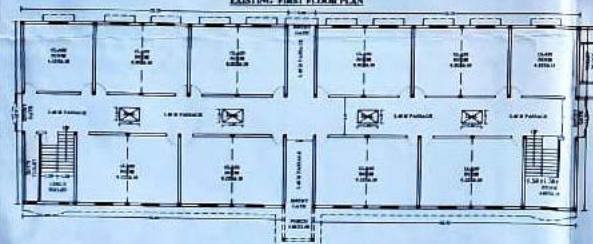
SIDE ELEVATION



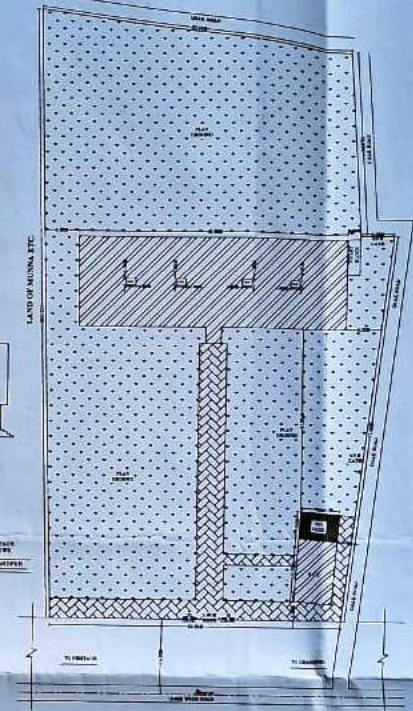
KEY PLAN S.T.A.



EXISTING FIRST FLOOR PLAN

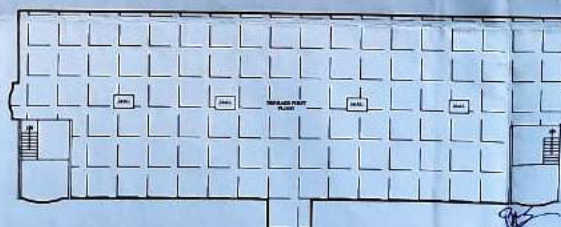


EXISTING GROUND FLOOR PLAN



LAND OF MINNA, ETC.

SITE PLAN (SCALE AT 1:500)



TERRACE PLAN

Manager
Diamond Public School
Chandigarh

FOR OFFICE USE ONLY

AREA CHART

LAND AREA	6068.80	SQ.M.
EXIST. COVD. AREA G.FLOOR (COVD. BY R.C.C.)	537.41	SQ.M.
EXIST. COVD. AREA G.F. OFFICE (COVD. BY R.C.C.)	87.86	SQ.M.
EXIST. COVD. AREA G.F. (COVD. BY TIN SHEET)	27.28	SQ.M.
EXIST. COVD. AREA G.F. (TOILET) (COVD. BY ACC. SHEET)	15.38	SQ.M.
EXIST. COVD. AREA P.F. (COVD. BY R.C.C.)	537.41	SQ.M.
EXIST. COVD. AREA MUMTY	64.59	SQ.M.
TOTAL COVD. AREA (COVD. BY R.C.C.)	2841.71	SQ.M.
OPEN AREA	5443.59	SQ.M.
G.FLOOR COVD. AREA	14.43	(IN %)
P.A.R.	8.31	

EXISTING BUILDING PLAN OF DIAMOND PUBLIC SCHOOL, SITE-1 AND SITE-2, 18, MIDHODPUR KANNA, NEHTAR ROAD NEAR RAILWAY CROSSING, KILASHA NO. 18, 19, PARGANA & TEBBI, CHANDIGARH DISTT. PUNJAB

MANAGER - BALKARAN SINGH SAINI

SCALE 1:200



DATE: / /

Signature and stamp of the Manager, Diamond Public School, Chandigarh.